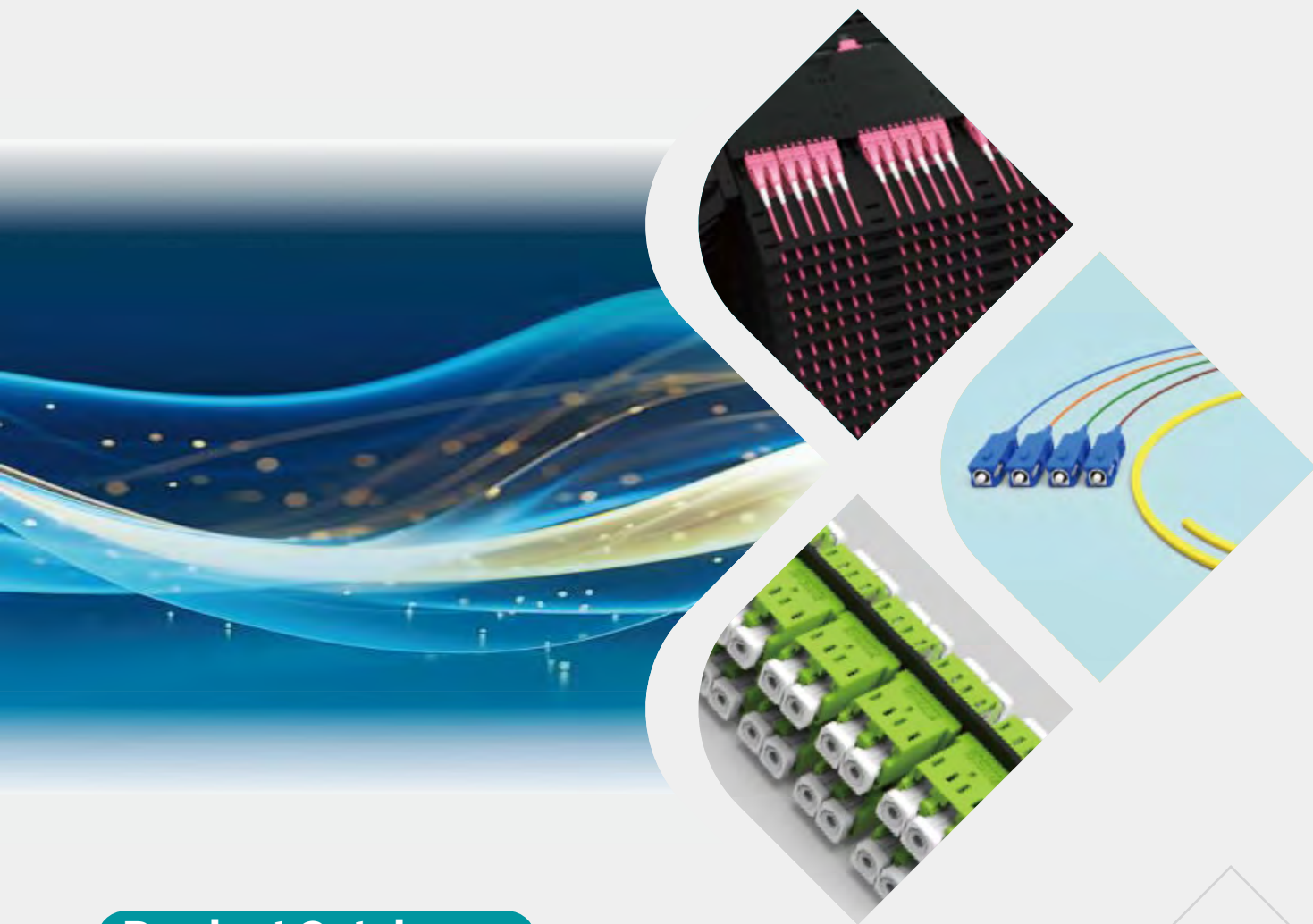




**ENMAN GROUP**



**Product Catalogue**

# **FIBER OPTIC SERIES**

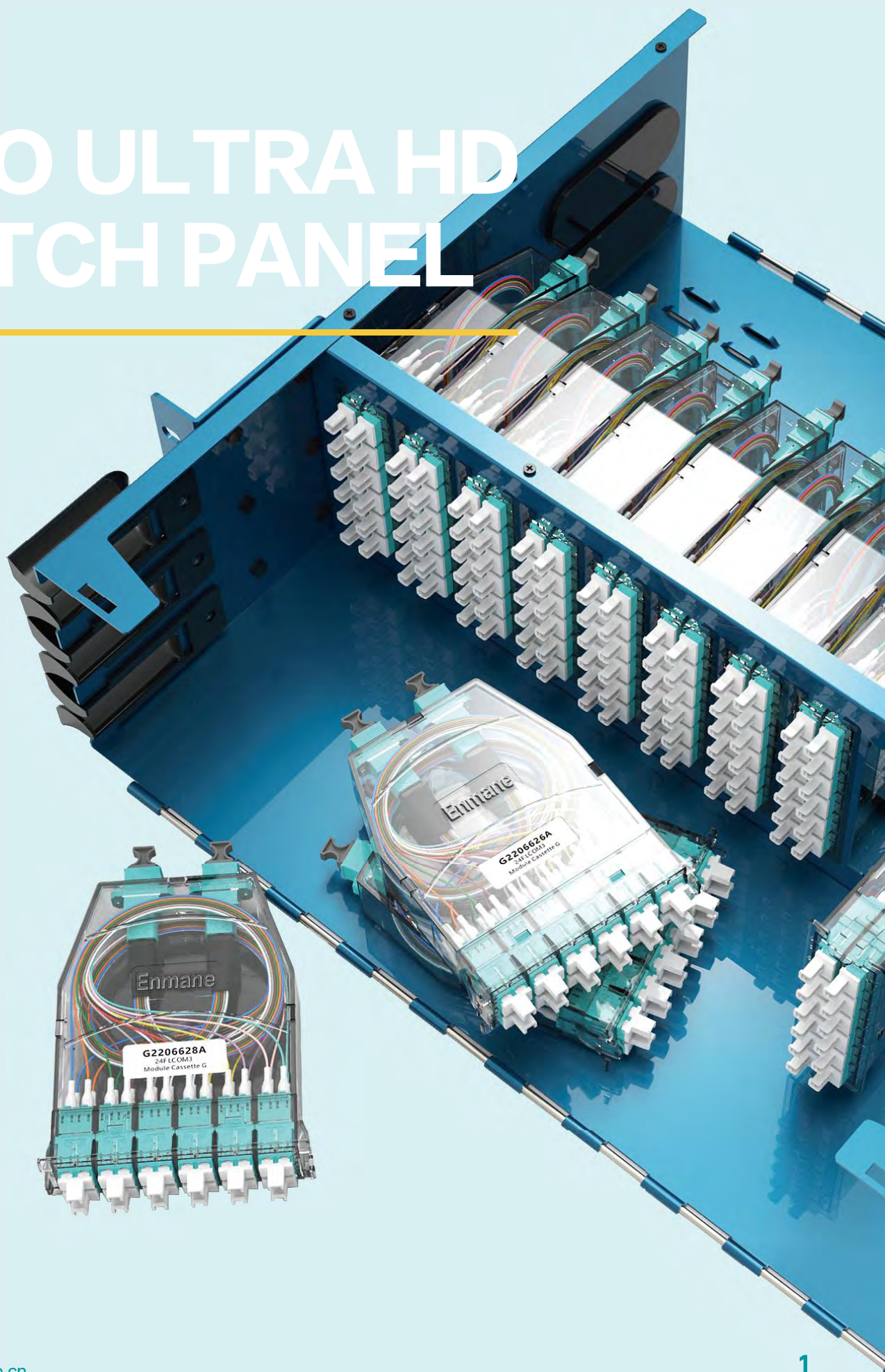


# CONTENTS



01 /	MPO Ultra HD Patch Panel	25 /	Adapters
03 /	Fiber Splice Patch Panel	28 /	Copper Patch Panel
09 /	Module	29 /	Indoor Termination Box
11 /	Adapter Panel	31 /	Optical Distribution Box
18 /	Fiber Patch Cord	34 /	Splice Tray
21 /	Fiber Pigtails	36 /	Fiber Protection & Management Accessories
23 /	Other Cable Assemblies		

# MPO ULTRA HD PATCH PANEL





## MPO Ultra HD Patch Panel



### EM-M1U0101-12

MPO modules and splice panel  
Metal slide rails  
MAX 144F in 1U  
Plug-in ABS cassette for easy deployment  
Customized LOGO is available



### EM-M2U0102-24

MPO modules and splice panel  
Metal Slide rails  
MAX 288F in 2U  
Plug-in ABS Cassette for easy deployment  
Customized LOGO is available



### EM-M4U0103-48

MPO modules and splice panel  
Metal slide rails  
MAX 576F in 4U  
Plug-in ABS cassette for easy deployment  
Customized LOGO is available



### EM-M1U0104-04

MPO modules and splice panel  
Fixed and simple design  
MAX 96F in 1U  
Plug-in ABS Cassette for easy deployment  
Front cable management tray is optional



### EM-M3U0105-12

MPO modules and splice panel  
Fixed and simple design  
MAX 288F in 3U  
Plug-in ABS cassette for easy deployment  
Customized LOGO is available



### EM-M4U0106-16

MPO modules and splice panel  
Fixed and simple design  
MAX 384F in 4U  
Plug-in ABS cassette for easy deployment  
Transparent front door



### EM-M1U0107-04

MPO pre-terminated solution  
Sliding and tilt-down drawer for easy operation  
MAX 96F in 1U  
Plug-in ABS cassette for easy deployment  
Customized LOGO is available



### EM-M1U0108-04

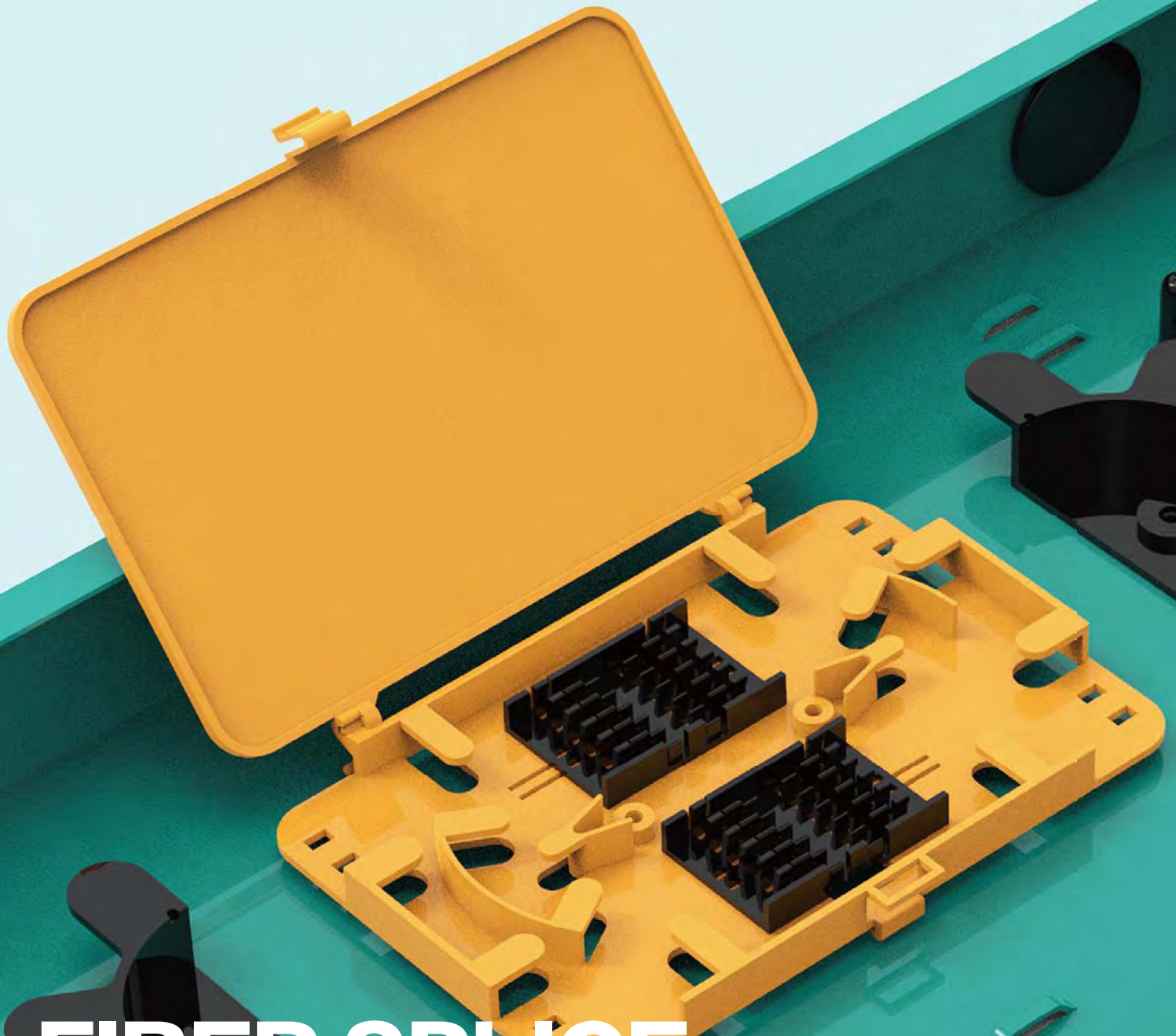
MPO pre-terminated solution  
MAX 96F in 1U  
Metal slide rails  
Plug-in ABS cassette for easy deployment  
Tool-less flippable top cover for easier cable management



### EM-M2U0109-08

MPO pre-terminated solution  
MAX 192F in 2U  
Fixed and simple design  
Plug-in ABS cassette for easy deployment  
Customized LOGO is available

Enmane



# FIBER SPLICE PATCH PANEL



## Fiber Splice Patch Panel



### EM-F1U0201-03

Flexible for fiber patch or splice  
Fixed and simple design  
MAX 72F in 1U  
D type splice tray + 125 adapter plate  
Customized LOGO is available



### EM-F1U0202-04

Flexible for fiber patch or splice  
Fixed and simple design  
MAX 96F in 1U  
H type splice tray + 92 Adapter Plate  
Customized LOGO is available



### EM-F1U0203-03

Flexible for fiber patch or splice  
Metal slide rails  
MAX 72F in 1U  
D type splice tray + 125 adapter plate  
Tool-less flippable top cover for easier cable management



### EM-F1U0204-04

Flexible for fiber patch or splice  
Metal slide rails  
MAX 96F in 1U  
H type splice tray + 92 adapter plate  
Tool-less flippable top cover for Easier cable management



### EM-T1U0205-04

Tool-less installation to 19" Rack  
Suitable for all fixed panel no front cable tray  
Hanging hole design facilitates installation  
Flip down front door



### EM-F3U0206-12

Flexible for fiber patch or splice  
Fixed and simple design  
MAX 144F in 3U  
G type splice tray + 92 adapter plate  
Customized LOGO is available



### EM-F4U0207-16

Flexible for fiber patch or splice  
Fixed and simple design  
MAX 384F in 4U  
G type splice tray + 92 adapter plate  
Transparent front panel



### EM-F1U0208-02

Flexible for fiber patch or splice  
Metal slide rails  
MAX 48F in 1U  
C type splice tray + 175 adapter plate  
Customized LOGO is available



### EM-F1U0209-03

Flexible for fiber patch or splice  
Metal slide rails  
MAX 48F in 1U  
C type splice tray + 125 adaptor plate  
Customized LOGO is available

## Fiber Splice Patch Panel



### EM-F2U0301-02

Flexible for fiber patch or splice  
Metal slide rails  
MAX 192F in 2U  
H type splice tray + 175 adapter plate  
Customized LOGO is available



### EM-F2U0302-02

Flexible for fiber patch or splice  
Metal slide rails  
MAX 96F in 2U  
C type splice tray + 175 adapter plate  
Customized LOGO is available



### EM-F2U0303-03

Flexible for fiber patch or splice  
Metal slide rails  
MAX 96F in 2U  
C type splice tray + 125 adapter plate  
Customized LOGO is available



### EM-F1U0304-02

Flexible for fiber patch or splice  
Metal slide rails  
MAX 48F in 1U  
C type splice tray + 175 adapter plate  
Customized LOGO is available



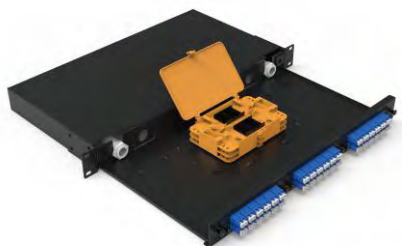
### EM-F1U0305-03

Flexible for fiber patch or splice  
Metal slide rails  
MAX 72F in 1U  
D type splice tray + 109 adapter plate  
Customized LOGO is available



### EM-F1U0306-01

Flexible for fiber patch or splice  
Drawer type  
MAX 48F in 1U  
With cable gland for better cable fix  
Customized LOGO is available



### EM-F1U0307-03

Flexible for fiber patch or splice  
Drawer type  
MAX 72F in 1U  
With cable gland for better cable fix  
Customized LOGO is available



### EM-F1U0308-01

Flexible for fiber patch or splice  
Fixed and simple design  
MAX 48F in 1U  
C type splice tray + single adapter plate  
Customized LOGO is available



### EM-F1U0309-02

Flexible for fiber patch or splice  
Fixed and simple design  
MAX 48F in 1U  
C type splice tray + 175 adapter plate  
Customized LOGO is available

## Fiber Splice Patch Panel



### EM-F2U0401-02

Flexible for fiber patch or splice  
Fixed and simple design  
MAX 96F in 2U  
C type splice tray + 175 adapter plate  
Customized LOGO is available



### EM-F1U0402-03

Flexible for fiber patch or splice  
Metal slide rails  
MAX 72F in 1U  
G type splice tray + LGX adapter plate  
Transparent Front Panel



### EM-F1U0403-03

Flexible for fiber patch or splice  
Metal slide rails  
MAX 96F in 1U  
H type splice tray + LGX adapter plate  
Customized LOGO is available



### EM-F1U0404-02

Flexible for fiber patch or splice  
Fixed and simple design  
MAX 48F in 1U  
Angle plastic panel which is better for fiber radius  
Transparent front panel



### EM-F2U0405-03

Flexible for fiber patch or splice  
Fixed and simple design  
MAX 96F in 2U  
G type splice tray + LGX adapter plate  
Transparent front panel



### EM-F2U0406-03

Flexible for fiber patch or splice  
Triple section stainless steel slide rail  
MAX 144F in 2U  
H type splice tray + LGX adapter plate  
Transparent front panel



### EM-M1U0407-12

MPO modules and splice panel  
Fixed and simple design  
MAX 144F in 1U  
Plug-in ABS cassette for easy deployment  
Transparent front panel



### EM-M2U0408-24

MPO modules and splice panel  
Fixed and simple design  
MAX 288F in 2U  
Plug-in ABS cassette for easy deployment

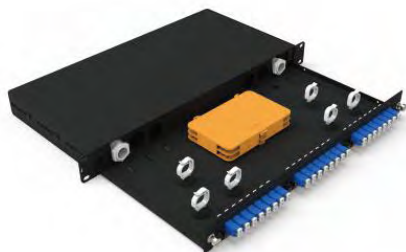


### EM-M4U0409-48

MPO modules and splice panel  
Fixed and simple design  
MAX 576F in 4U  
Plug-in ABS cassette for easy deployment



## Fiber Splice Patch Panel



### EM-F1U0501-03

Flexible for fiber patch or splice  
Drawer type  
MAX 48F in 1U  
C type splice tray + LGX adapter plate  
With cable gland for better cable fix



### EM-F2U0502-01

Flexible for fiber patch or splice  
Drawer type  
MAX 144F in 2U  
H type splice tray + unibody adapter plate  
Customized LOGO is available



### EM-F1U0503-01

Flexible for fiber patch or splice  
Drawer type  
MAX 48F in 1U  
C type splice tray + unibody adapter plate  
With cable gland for better cable fix



### EM-F1U0504-02

Flexible for fiber patch or splice  
Metal slide rails  
MAX 48F in 1U  
C type splice tray + 175 adapter plate



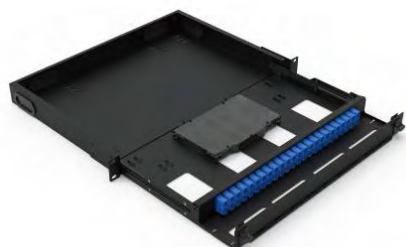
### EM-F1U0505-01

Flexible for fiber patch or splice  
Metal slide rails  
MAX 48F in 1U  
C type splice tray + unibody adapter plate



### EM-F1U0506-01

Flexible for fiber patch or splice  
Fixed and simple design  
MAX 48F in 1U  
With cable gland for better cable fix  
Customized LOGO is available



### EM-F1U0507-01

Flexible for fiber patch or splice  
Sliding and tilt-down drawer for easy operation  
MAX 96F in 1U  
H type splice tray + unibody adapter plate  
Customized LOGO is available



### EM-F1U0508-04

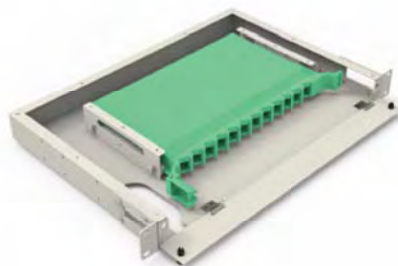
Flexible for fiber patch or splice  
Sliding and tilt-down drawer for easy operation  
MAX 96F in 1U  
H type splice tray + 92 adapter plate  
Customized LOGO is available



### EM-S1U0509-02

Standard 19" installation  
Hybrid fiber & copper application  
Easy switch the copper & fiber with transfer kit  
Plug-in cassettes for easy deployment  
With adjustable cable holder for fixing better

## Fiber Splice Patch Panel



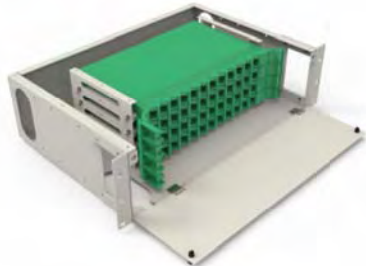
### EM-F1U0601-01

Flexible for fiber patch or splice  
Fixed and simple design  
MAX 24F in 1U  
Unibody splice tray  
Removable front door



### EM-F2U0602-02

Flexible for fiber patch or splice  
Fixed and simple design  
MAX 48F in 2U  
Unibody splice tray  
Removable front door



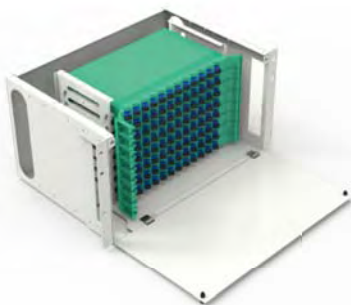
### EM-F3U0603-04

Flexible for fiber patch or splice  
Fixed and simple design  
MAX 96F in 3U  
Unibody splice tray  
Removable front door



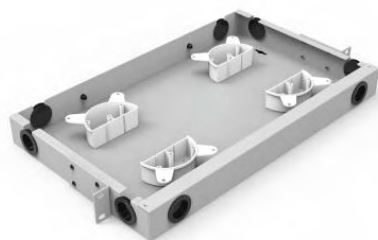
### EM-F4U0604-06

Flexible for fiber patch or splice  
Fixed and simple design  
MAX 144F in 4U  
Unibody splice tray  
Removable front door



### EM-F5.5U0605-08

Flexible for fiber patch or splice  
Fixed and simple design  
MAX 192F in 5.5U  
Unibody splice tray  
Removable front door



### EM-F1U0606-01

Fiber storage box  
Fixed and simple design  
Mainly used for store the extra cable



### EM-F1U0607-02

Flexible for fiber patch or splice  
Rotary drawer with flippable cover  
MAX 48F in 1U  
C type splice tray + 165 adapter plate  
Customized LOGO is available

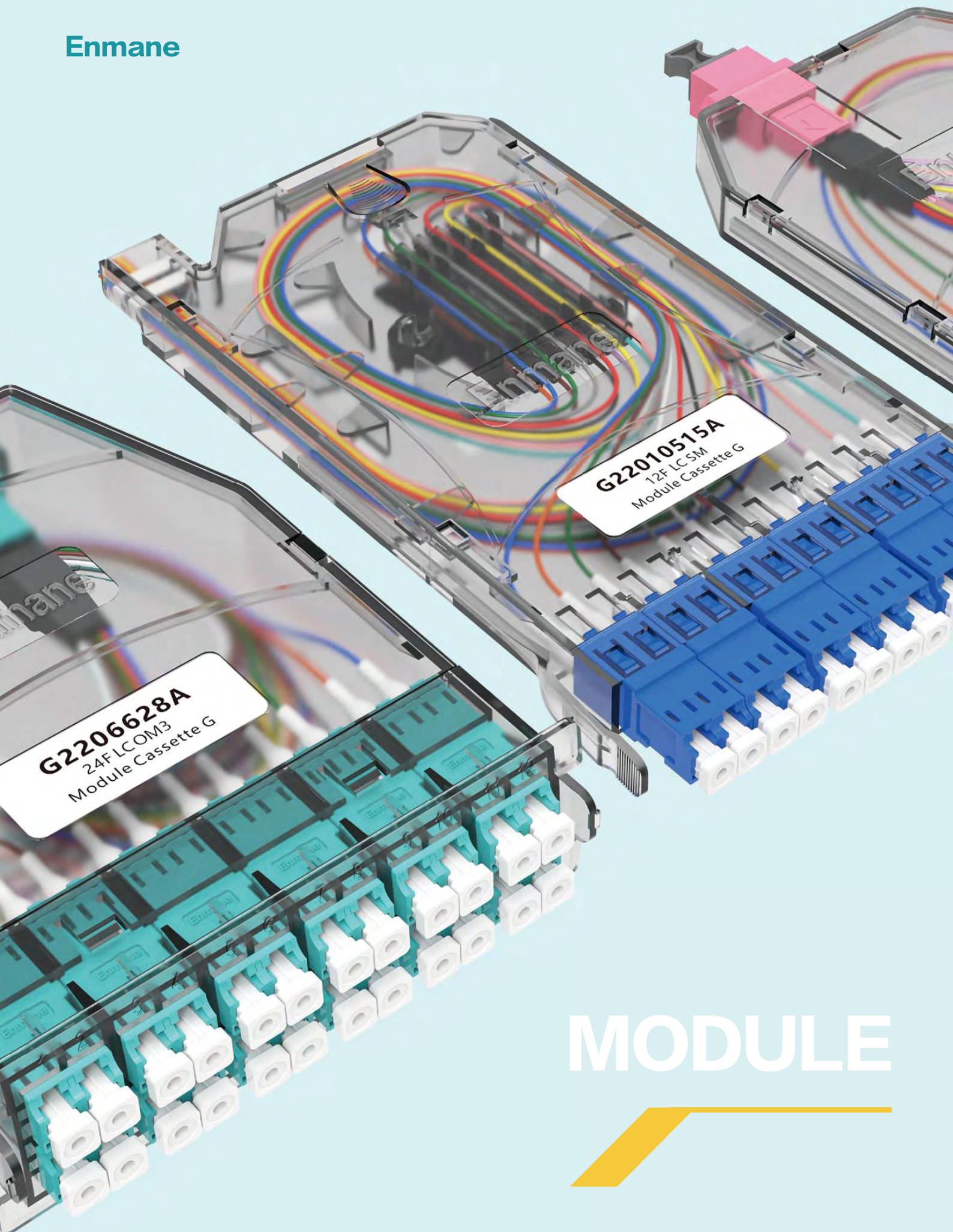


### EM-F4U0608-12

Flexible for fiber patch or splice  
Fixed and simple design  
MAX 288F in 4U  
D type splice tray + module plate  
Transparent front panel



Enmane



MODULE





## EM-HZU0701-12

High density MPO pre-terminated application  
Optional with black or transparent housing  
Lightweight, only 40g  
Easy plug and play with one hand  
Adaptor positioning design make MPO adapters fit tightly  
Customized color and LOGO is available



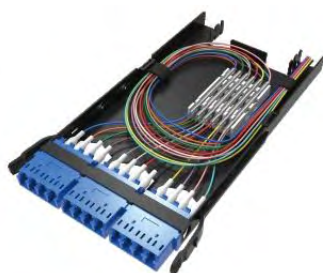
## EM-HZU0702-24

High density MPO pre-terminated application  
Optional with black or transparent housing  
Lightweight, only 70g  
Easy plug and play with one hand  
Adaptor positioning design make MPO adapters fit tightly  
Customized color and LOGO is available



## EM-HZU0703-12

High density splicing application  
Optional with black or transparent housing  
Lightweight, only 60g  
Easy plug and play with one hand  
Customized color and LOGO is available



## EM-HZU0704-12

High density splicing application  
Metal shell sturdy and durable  
Easy plug and play with one hand



## EM-HZU0705-06

High density splicing application  
Metal housing  
Easy plug and play with one hand



## EM-HZU0706-24

High density MPO, splice, PLC splitter application  
Optional with black or transparent housing  
Lightweight, only 110g  
Customized color and LOGO is available



## EM-HZU0707-24

High density splicing application  
Metal housing  
Easy plug and play with one hand



## EM-HZU0708-12

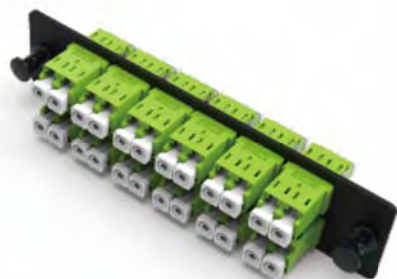
High density splicing application  
Metal shell sturdy and durable  
C type splice tray + adapter plate

Enmane

# ADAPTER PANEL

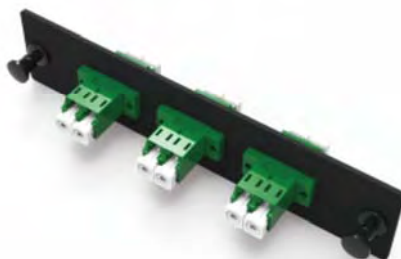






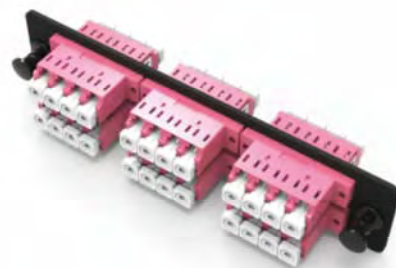
### EM-CZU0801-12

Comply with USA market standard  
Premium cold steel  
6.4 snap latch



### EM-CZU0802-03

Comply with USA market standard  
Premium cold steel  
6.4 snap latch



### EM-CZU0803-06

Comply with USA market standard  
Premium cold steel  
6.4 snap latch



### EM-CZU0804-06

Comply with USA market standard  
Premium cold steel  
6.4 snap latch



### EM-CZU0805-06

Comply with USA market standard  
Premium cold steel  
6.4 snap latch



### EM-CZU0806-12

Comply with USA market standard  
Premium cold steel  
6.4 snap latch



### EM-CZU0807-06

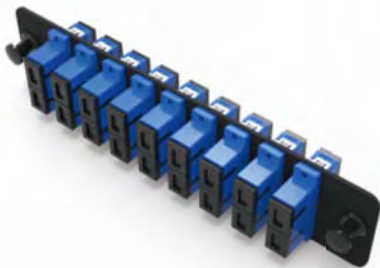
Comply with USA market standard  
Premium cold steel  
6.4 snap latch



### EM-CZU0808-00

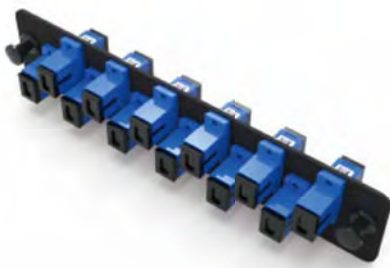
Comply with USA market standard  
Premium cold steel  
6.4 snap latch





**EM-1ZU0901-09**

175 standard adapter plate  
Premium cold steel  
8.2 snap latch



**EM-1ZU0902-12**

175 standard adapter plate  
Premium cold steel  
8.2 snap latch



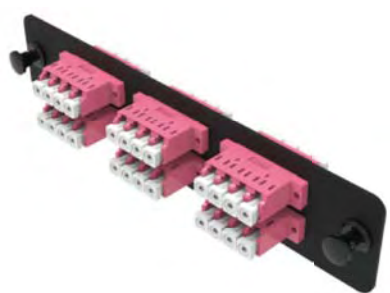
**EM-1ZU0903-12**

175 standard adapter plate  
Premium cold steel  
8.2 snap latch



**EM-1ZU0904-12**

175 standard adapter plate  
Premium cold steel  
8.2 snap latch



**EM-1ZU0905-06**

175 standard adapter plate  
Premium cold steel  
8.2 snap latch



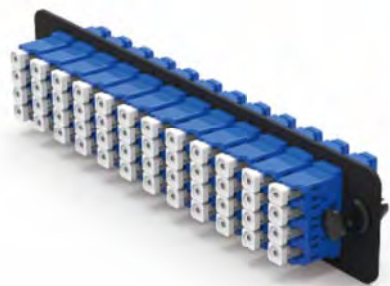
**EM-1ZU0906-06**

175 standard adapter plate  
Premium cold steel  
8.2 snap latch



**EM-1ZU0907-18**

175 standard adapter plate  
Premium cold steel  
8.2 snap latch



**EM-1ZU0908-12**

175 standard adapter plate  
Premium cold steel  
8.2 snap latch



**EM-1ZU0909-06**

175 standard adapter plate  
Premium cold steel  
8.2 snap latch



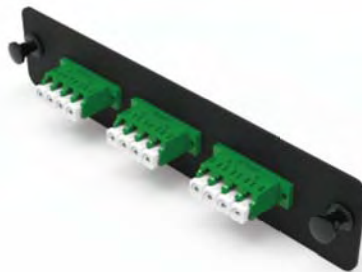
**EM-1ZU1001-06**

175 standard adapter plate  
Premium cold steel with rear plate  
8.2 snap latch



**EM-1ZU1002-12**

175 standard adapter plate  
Premium cold steel with rear plate  
8.2 snap latch



**EM-1ZU1003-03**

175 standard adapter plate  
Premium cold steel with rear plate  
8.2 snap latch



**EM-1ZU1004-09**

175 standard adapter plate  
Premium cold steel with rear plate  
8.2 snap latch



**EM-1ZU1005-00**

175 standard adapter plate  
Premium cold steel with rear plate  
8.2 snap latch



**EM-9ZU1101-00**

92 standard adapter plate  
Lightweight ABS material  
Plug-in latch



**EM-9ZU1102-06**

92 standard adapter plate  
Lightweight ABS material  
Plug-in latch



**EM-9ZU1103-06**

92 standard adapter plate  
Lightweight ABS material  
Plug-in latch



**EM-9ZU1104-12**

92 standard adapter plate  
Lightweight ABS material  
Plug-in latch



**EM-9ZU1105-12**

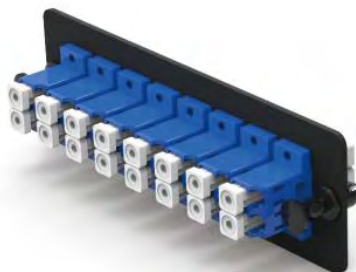
92 standard adapter plate  
Lightweight ABS material  
Plug-in latch  
Also workable for 92 MPO cassette





**EM-1ZU1201-12**

109 standard adapter plate  
Premium cold steel  
6.4 snap latch



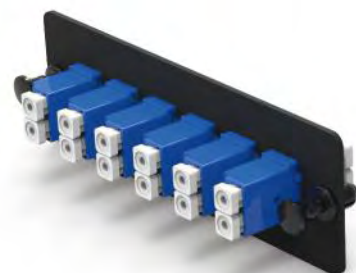
**EM-1ZU1202-08**

109 standard adapter plate  
Premium cold steel  
6.4 snap latch



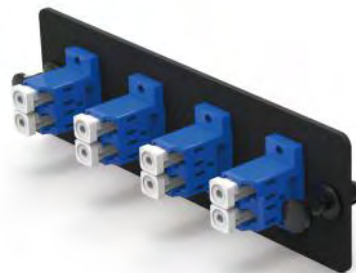
**EM-1ZU1203-06**

109 standard adapter plate  
Premium cold steel  
6.4 snap latch



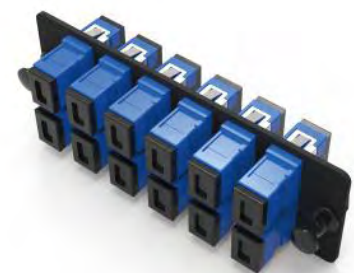
**EM-1ZU1204-06**

109 standard adapter plate  
Premium cold steel  
6.4 snap latch



**EM-1ZU1205-04**

109 standard adapter plate  
Premium cold steel  
6.4 snap latch



**EM-1ZU1206-12**

109 standard adapter plate  
Premium cold steel  
6.4 snap latch



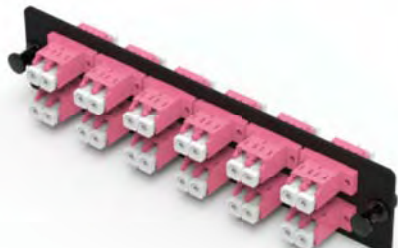
**EM-1ZU1207-08**

109 standard adapter plate  
Premium cold steel  
6.4 snap latch



**EM-1ZU1301-12**

165 Standard adapter plate  
Premium cold steel  
6.4 snap latch



**EM-1ZU1302-12**

165 Standard adapter plate  
Premium cold steel  
6.4 snap latch



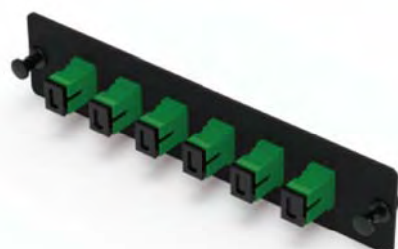
**EM-1ZU1303-12**

165 Standard adapter plate  
Premium cold steel  
6.4 snap latch



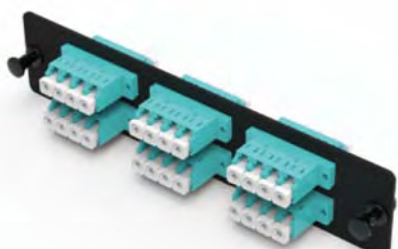
**EM-1ZU1304-16**

165 Standard adapter plate  
Premium cold steel  
6.4 snap latch



**EM-1ZU1305-06**

165 Standard adapter plate  
Premium cold steel  
6.4 snap latch



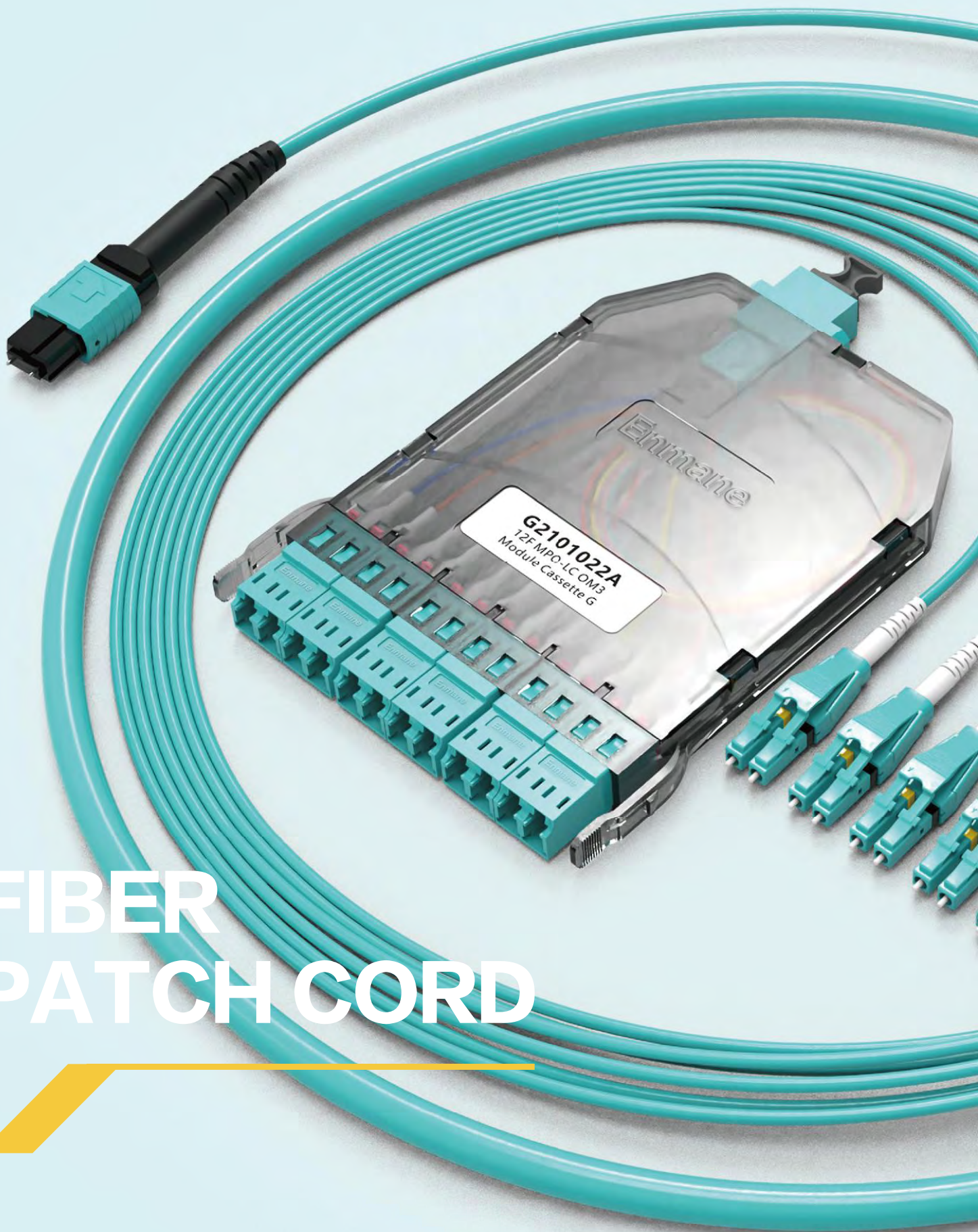
**EM-1ZU1306-06**

165 Standard adapter plate  
Premium cold steel  
6.4 snap latch



Enmane

# FIBER PATCH CORD







## EM-AZU1402-02

Available for Single Mode & Multi Mode fiber  
Single Mode:IL  $\leq 0.3\text{dB}$  / Multi Mode:IL  $\leq 0.2\text{dB}$   
With PVC or LSZH cable  
Vertical tensile strength  $\geq 70\text{N}$   
Length can be customized



## EM-AZU1403-02

Available for Single Mode & Multi Mode fiber  
Single Mode:IL  $\leq 0.3\text{dB}$  / Multi Mode:IL  $\leq 0.2\text{dB}$   
With PVC or LSZH cable  
Vertical tensile strength  $\geq 70\text{N}$   
Length can be customized



## EM-AZU1404-02

Available for Single Mode & Multi Mode fiber  
Single Mode:IL  $\leq 0.3\text{dB}$  / Multi Mode:IL  $\leq 0.2\text{dB}$   
With PVC or LSZH cable  
Vertical tensile strength  $\geq 70\text{N}$   
Length can be customized



## EM-AZU1405-02

Available for Single Mode & Multi Mode fiber  
Single Mode:IL  $\leq 0.3\text{dB}$  / Multi Mode:IL  $\leq 0.2\text{dB}$   
With PVC or LSZH cable  
Vertical tensile strength  $\geq 70\text{N}$   
Length can be customized



## EM-AZU1406-02

Available for Single Mode & Multi Mode fiber  
Single Mode:IL  $\leq 0.3\text{dB}$  / Multi Mode:IL  $\leq 0.2\text{dB}$   
With PVC or LSZH cable  
Vertical tensile strength  $\geq 70\text{N}$   
Length can be customized



## EM-AZU1407-02

Available for Single Mode & Multi Mode fiber  
Single Mode:IL  $\leq 0.3\text{dB}$  / Multi Mode:IL  $\leq 0.2\text{dB}$   
With PVC or LSZH cable  
Vertical tensile strength  $\geq 70\text{N}$   
Length can be customized



## EM-AZU1408-02

Available for Single Mode & Multi Mode fiber  
Single Mode:IL  $\leq 0.3\text{dB}$  / Multi Mode:IL  $\leq 0.2\text{dB}$   
With PVC or LSZH cable  
Vertical tensile strength  $\geq 70\text{N}$   
Length can be customized



## EM-AZU1409-02

Available for Single Mode & Multi Mode fiber  
Single Mode:IL  $\leq 0.3\text{dB}$  / Multi Mode:IL  $\leq 0.2\text{dB}$   
With PVC or LSZH cable  
Vertical tensile strength  $\geq 70\text{N}$   
Length can be customized



## EM-AZU1501-02

Available for Single Mode & Multi Mode fiber  
Single Mode:IL  $\leq 0.3\text{dB}$  / Multi Mode:IL  $\leq 0.2\text{dB}$   
With PVC or LSZH cable  
Vertical tensile strength  $\geq 70\text{N}$   
Length can be customized



## EM-AZU1502-02

Available for Single Mode & Multi Mode fiber  
Single Mode:IL  $\leq 0.3\text{dB}$  / Multi Mode:IL  $\leq 0.2\text{dB}$   
With PVC or LSZH cable  
Vertical tensile strength  $\geq 70\text{N}$   
Length can be customized



## EM-AZU1503-02

Metal Dust Cap, More Secure to anti-Laser  
IL  $\leq 0.3\text{dB}$   
With PVC or LSZH cable  
Vertical tensile strength  $\geq 70\text{N}$   
Length can be customized



## EM-AZU1504-02

Available for Single Mode & Multi Mode fiber  
Single Mode:IL  $\leq 0.3\text{dB}$  / Multi Mode:IL  $\leq 0.2\text{dB}$   
With PVC or LSZH cable  
Vertical tensile strength  $\geq 70\text{N}$   
Length can be customized



## EM-AZU1505-01

Available for Single Mode & Multi Mode fiber  
Single Mode:IL  $\leq 0.3\text{dB}$  / Multi Mode:IL  $\leq 0.2\text{dB}$   
With PVC or LSZH cable  
Vertical tensile strength  $\geq 70\text{N}$   
Length can be customized



## EM-AZU1506-01

Available for Single Mode & Multi Mode fiber  
Single Mode:IL  $\leq 0.3\text{dB}$  / Multi Mode:IL  $\leq 0.2\text{dB}$   
With PVC or LSZH cable  
Vertical tensile strength  $\geq 70\text{N}$   
Length can be customized



## EM-AZU1507-01

Available for Single Mode & Multi Mode fiber  
Single Mode:IL  $\leq 0.3\text{dB}$  / Multi Mode:IL  $\leq 0.2\text{dB}$   
With PVC or LSZH cable  
Vertical tensile strength  $\geq 70\text{N}$   
Length can be customized



## EM-AZU1508-01

Available for Single Mode & Multi Mode fiber  
Single Mode:IL  $\leq 0.3\text{dB}$  / Multi Mode:IL  $\leq 0.2\text{dB}$   
With PVC or LSZH cable  
Vertical tensile strength  $\geq 70\text{N}$   
Length can be customized



## EM-AZU1509-01

Available for Single Mode & Multi Mode fiber  
Single Mode:IL  $\leq 0.3\text{dB}$  / Multi Mode:IL  $\leq 0.2\text{dB}$   
With PVC or LSZH cable  
Vertical tensile strength  $\geq 70\text{N}$   
Length can be customized

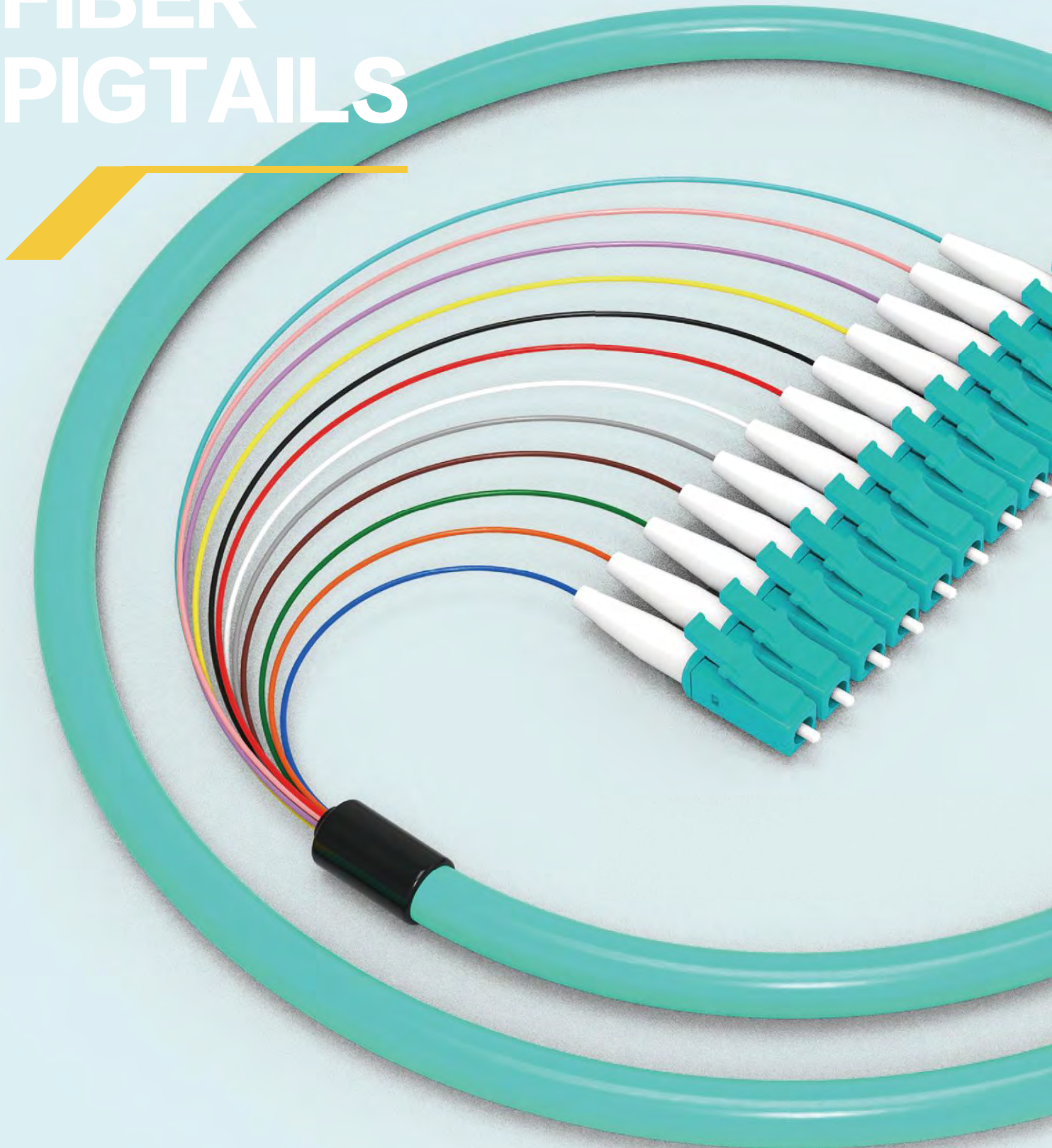


## EM-AZU1601-01

Available for Single Mode & Multi Mode fiber  
Single Mode:IL  $\leq 0.3\text{dB}$  / Multi Mode:IL  $\leq 0.2\text{dB}$   
With PVC or LSZH cable  
Vertical tensile strength  $\geq 70\text{N}$   
Length can be customized

Enmane

# FIBER PIGTAILS







### EM-AZU1701-01

Available for Single Mode & Multi Mode fiber  
Single Mode:IL  $\leq 0.3\text{dB}$  / Multi Mode:IL  $\leq 0.2\text{dB}$   
With PVC or LSZH cable  
Length can be customized



### EM-AZU1702-01

Available for Single Mode & Multi Mode fiber  
Single Mode:IL  $\leq 0.3\text{dB}$  / Multi Mode:IL  $\leq 0.2\text{dB}$   
With PVC or LSZH cable  
Length can be customized



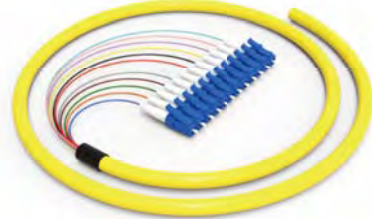
### EM-AZU1703-01

Available for Single Mode & Multi Mode fiber  
Single Mode:IL  $\leq 0.3\text{dB}$  / Multi Mode:IL  $\leq 0.2\text{dB}$   
With PVC or LSZH cable  
Length can be customized



### EM-AZU1704-01

Available for Single Mode & Multi Mode fiber  
Single Mode:IL  $\leq 0.3\text{dB}$  / Multi Mode:IL  $\leq 0.2\text{dB}$   
With PVC or LSZH cable  
Length can be customized



### EM-AZU1705-01

Available for Single Mode & Multi Mode fiber  
Single Mode:IL  $\leq 0.3\text{dB}$  / Multi Mode:IL  $\leq 0.2\text{dB}$   
With PVC or LSZH cable  
Length can be customized



### EM-AZU1706-01

Available for Single Mode & Multi Mode fiber  
Single Mode:IL  $\leq 0.3\text{dB}$  / Multi Mode:IL  $\leq 0.2\text{dB}$   
With PVC or LSZH cable  
Support LC/SC/ST/FC Connector  
Length can be customized

Enmane

# OTHER CABLE ASSEMBLIES

A coiled teal cable with black connectors and a yellow graphic element. The cable is shown in a large loop, with two connectors visible. The connectors are black with teal accents. A yellow graphic element, consisting of a diagonal line and a horizontal line, is positioned below the main title.



### EM-AZU1801-01

Available for Single Mode & Multi Mode fiber  
With PVC or LSZH cable  
Length can be customized



### EM-AZU1802-01

Available for Single Mode & Multi Mode fiber  
With PVC or LSZH cable  
2.0/3.0 Vertical tensile strength  $\geq 70N$   
Length can be customized



### EM-AZU1803-01

Available for Single Mode & Multi Mode fiber  
With PVC or LSZH cable  
2.0/3.0 Vertical tensile strength  $\geq 70N$   
Length can be customized



### EM-AZU1804-01

Available for Single Mode & Multi Mode fiber  
With PVC or LSZH cable  
Vertical tensile strength  $\geq 70N$   
Length can be customized



### EM-AZU1805-01

Available for Single Mode & Multi Mode fiber  
Pressure resistant and rodent resistant optical cable  
With PVC or LSZH cable  
Vertical tensile strength  $\geq 70N$   
Length can be customized



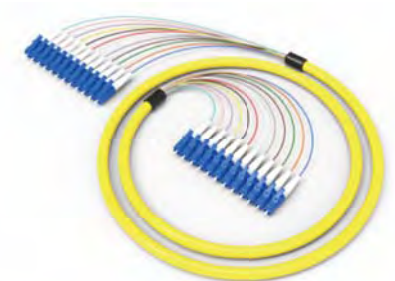
### EM-AZU1806-01

Available for Single Mode & Multi Mode fiber  
With PVC or LSZH cable  
Vertical tensile strength  $\geq 70N$   
Length can be customized



### EM-AZU1807-01

Available for Single Mode & Multi Mode fiber  
With PVC or LSZH cable  
Length can be customized



### EM-AZU1808-01

Available for Single Mode & Multi Mode fiber  
With PVC or LSZH cable  
Length can be customized



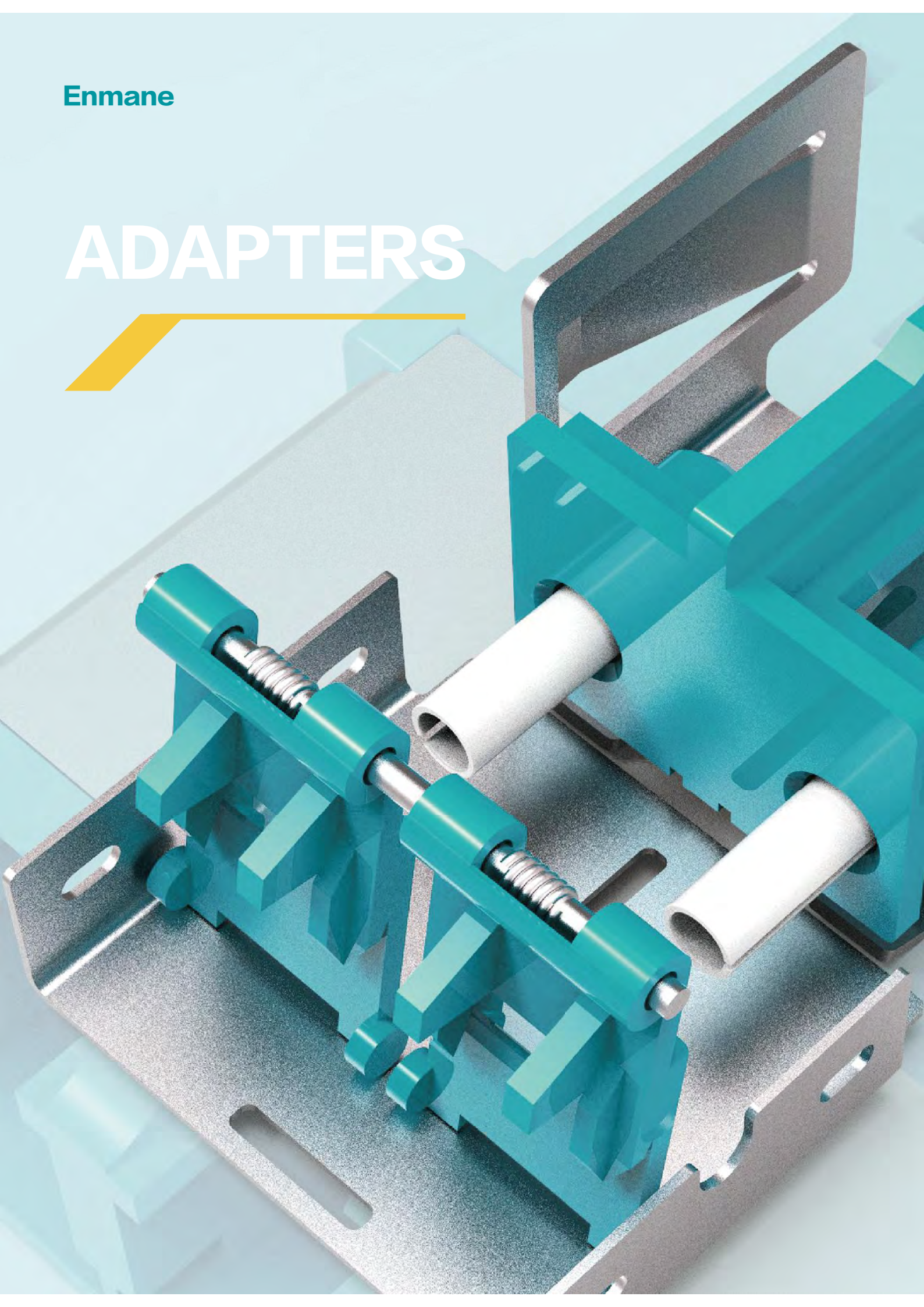
### EM-AZU1809-01

Available for Single Mode & Multi Mode fiber  
With PVC or LSZH cable  
2.0/3.0 Vertical tensile strength  $\geq 70N$   
Length can be customized



Enmane

# ADAPTERS







### EM-IZU1901-01

Internal metal shutter  
With grade a ceramic sleeve  
Unibody housing  
Triple sides tight fix clip  
Customized LOGO available



### EM-IZU1902-01

Internal metal shutter  
With grade a ceramic sleeve  
Unibody housing  
Triple sides tight fix clip  
Customized LOGO available



### EM-UZU1903-01

Up-Down clip  
With grade a ceramic sleeve  
Unibody housing  
Design for SP series cassette  
Customized LOGO available



### EM-UZU1904-01

Up-Down clip  
With grade a ceramic sleeve  
Unibody housing



### EM-UZU1905-01

Up-Down clip  
Inner shutter  
With grade a ceramic sleeve  
Unibody housing



### EM-IZU1906-01

Inner Shutter  
With grade a ceramic sleeve  
Unibody housing  
Triple sides tight fix clip



### EM-WZU1907-01

With grade a ceramic sleeve  
Unibody housing  
Triple sides tight fix clip  
Customized LOGO available



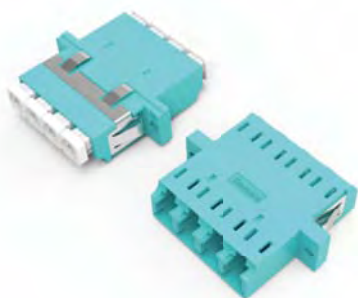
### EM-WZU1908-01

With grade a ceramic sleeve  
Unibody housing  
Triple sides tight fix clip  
Customized LOGO available



### EM-WZU1909-01

With grade a ceramic sleeve  
Unibody housing  
Triple sides tight fix clip  
Customized LOGO available



### EM-WZU2001-01

With grade a ceramic sleeve  
Unibody housing  
Triple sides tight fix clip  
Customized LOGO available



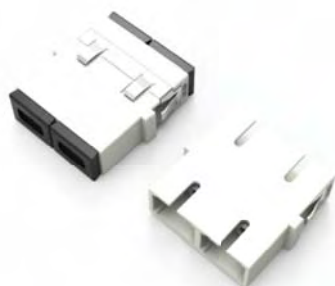
### EM-WZU2002-01

With grade a ceramic sleeve  
Unibody housing  
Triple sides tight fix clip  
Customized LOGO available



### EM-WZU2003-01

With grade a ceramic sleeve  
Unibody housing  
Triple sides tight fix clip  
Customized LOGO available



### EM-WZU2004-01

With grade a ceramic sleeve  
Unibody housing  
Triple sides tight fix clip  
Customized LOGO available



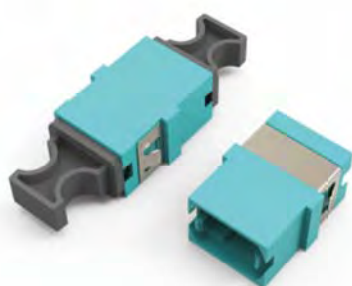
### EM-WZU2005-01

With grade a ceramic sleeve  
Unibody housing  
Triple sides tight fix clip  
Customized LOGO available



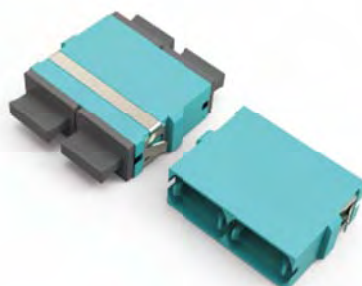
### EM-CZU2006-01

Compatible with all MPO/MTP adapters  
Unibody housing  
Customized LOGO available



### EM-CZU2007-01

Compatible with all MPO/MTP adapters  
Unibody housing  
Customized LOGO available



### EM-CZU2008-01

Compatible with all MPO/MTP adapters  
Unibody housing  
Customized LOGO available



### EM-CZU2009-01

Compatible with all MPO/MTP Connector  
Switchable polarity  
Triple sides tight fix clip  
Customized LOGO available





## EM-SZU2102-01

Square/Diamond/Double D/Single D optional  
Metal housing with strong reliability  
All copper/zinc alloy optional  
With grade a ceramic sleeve



## EM-MZU2103-01

Metal housing with strong reliability  
-40~85°C working environment  
All copper/zinc alloy optional  
With grade a ceramic sleeve



## EM-S1UW001-24

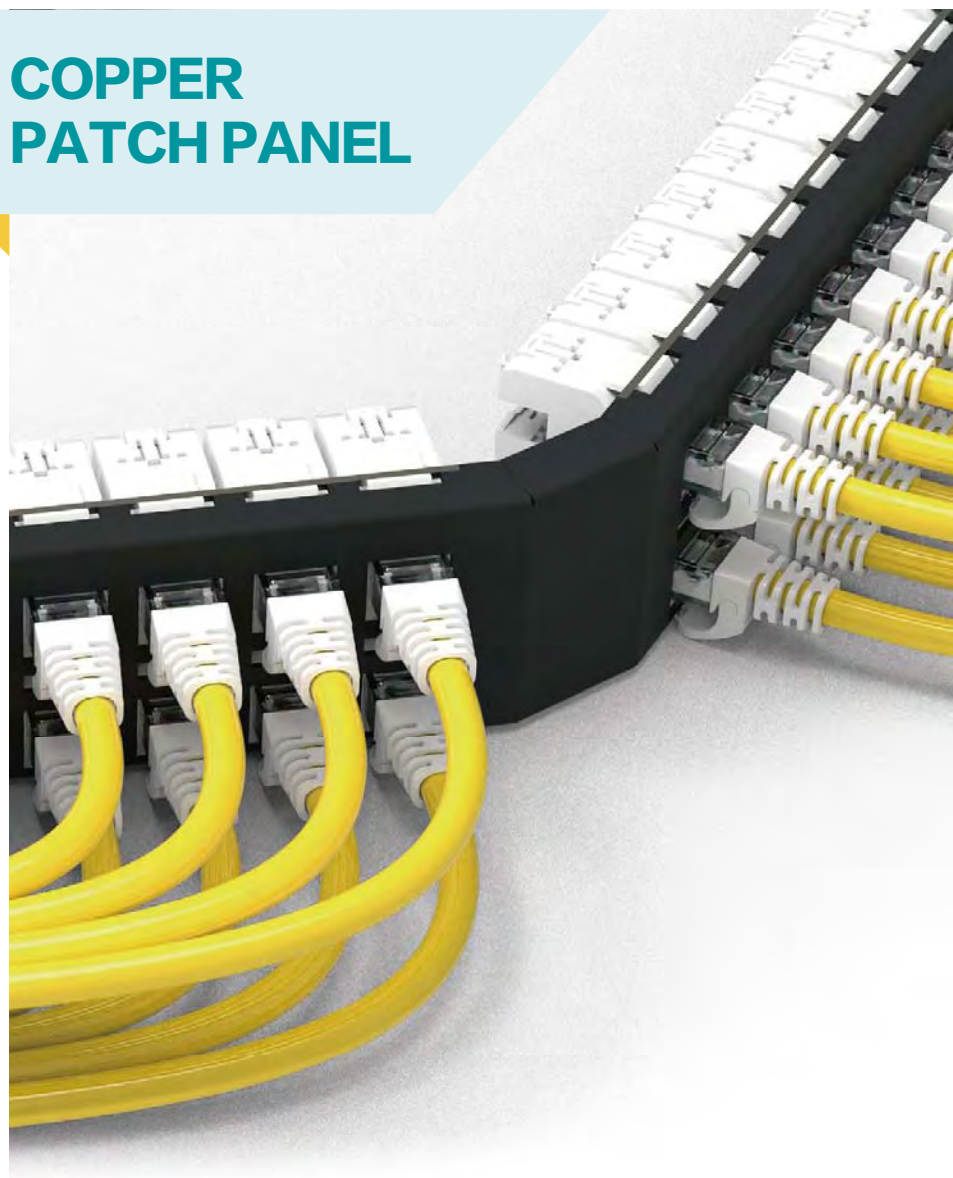
Standard 19" installation  
Integrated 6-port module with paper labels  
Dual color port panel  
Rear bracket T-hole



## EM-S1U0509-02

Standard 19" installation  
Hybrid fiber & copper application  
Easy switch the copper & fiber with transfer kit  
Plug-in cassettes for easy deployment  
With ABS cable clamp for cable entry

## COPPER PATCH PANEL



Enmane

# INDOOR TERMINATION BOX







### EM-WZU2801-04

Wall mounted installation  
MAX 8 core  
Aluminum material box  
The cover plate can be locked



### EM-WZU2802-08

Wall mounted installation  
MAX 16 core  
Aluminum material box  
The cover plate can be locked



### EM-WZU2803-12

Wall mounted installation  
MAX 24 core  
Aluminum material box  
The cover plate can be locked



### EM-WZU2804-12

Wall mounted installation  
MAX 48 core  
175 adapter plate + D type splice tray  
The cover plate can be locked



### EM-WZU2805-48

Wall mounted installation  
MAX 96 core  
175 adapter plate + D type splice tray  
The cover plate can be locked



### EM-WZU2806-48

Wall mounted installation  
MAX 96 Core  
175 adapter plate + D type splice tray  
The cover plate can be locked  
Fiber optic cable compression block fixed cable entry



### EM-WZU2807-04

Wall mounted installation  
MAX 8 core  
Removable and lockable cover plate  
Angled adapter panel  
With cable clamp for cable entry



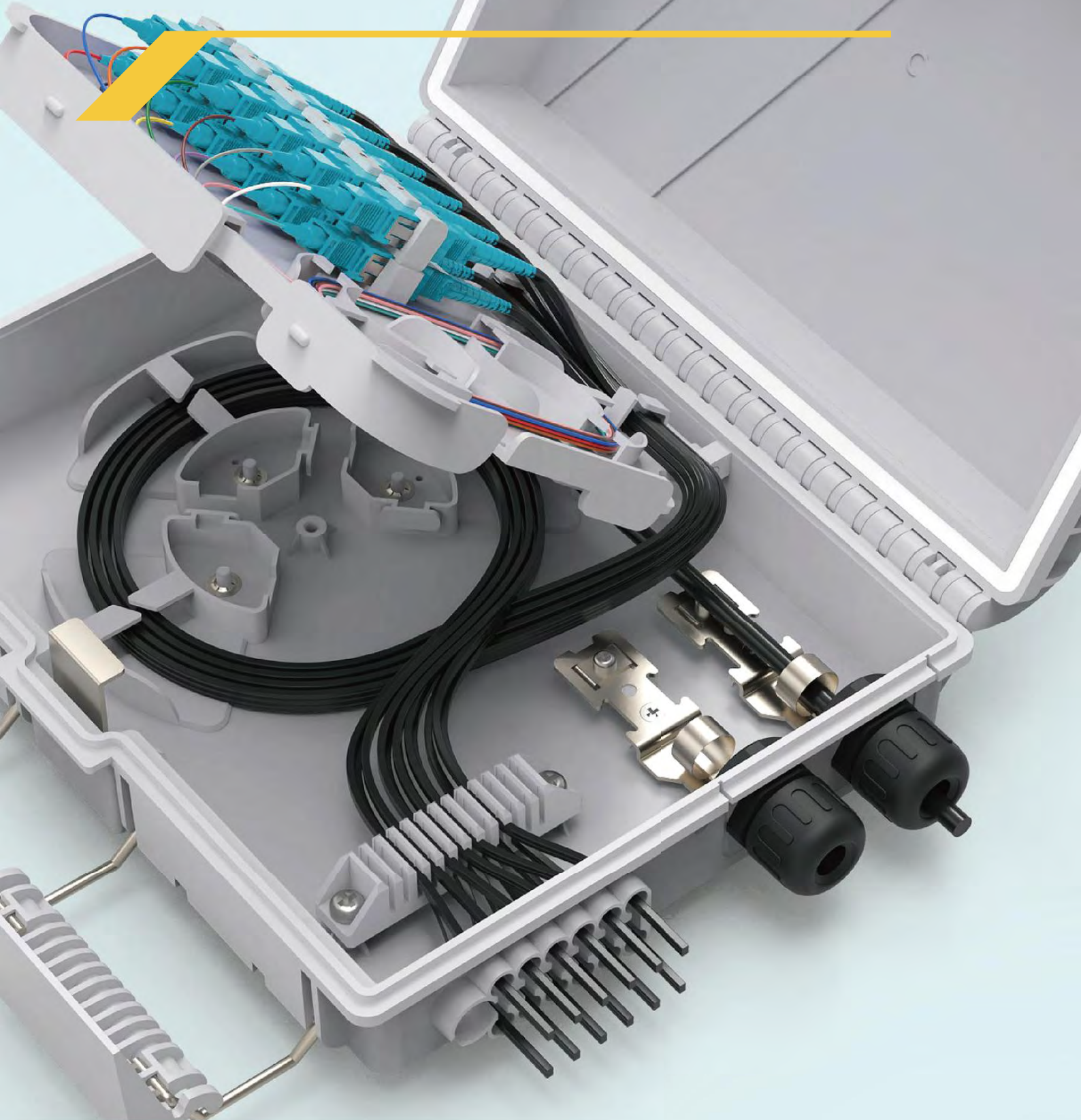
### EM-WZU2808-08

Wall mounted installation  
MAX 16 core  
Removable and lockable cover plate  
Angled adapter panel  
With cable clamp for cable entry



Enmane

# OPTICAL DISTRIBUTION BOX



## Optical Distribution Box



### EM-IZU2901-01

lightweight and exquisite box  
Customizable LOGO  
Supports splicing, wiring, and fiber storage



### EM-IZU2902-02

lightweight and exquisite box  
Customizable LOGO  
Supports splicing, wiring, and fiber storage



### EM-IZU2903-02

lightweight and exquisite box  
Customizable LOGO  
Supports splicing, wiring, and fiber storage



### EM-IZU2904-04

lightweight and exquisite box  
Customizable LOGO  
Supports splicing, wiring, and fiber storage



### EM-FZU2905-02

Fully enclosed structure  
Waterproof, dustproof, and anti-aging design  
IP65  
Supports fiber cable/drop cable's fixing,  
distribution and storage  
Supports splicing, wiring, and fiber storage



### EM-FZU2906-02

Fully enclosed structure  
Waterproof, dustproof, and anti-aging design  
IP65  
Supports fiber cable/drop cable's fixing,  
distribution and storage  
Supports splicing, wiring, and fiber storage



### EM-FZU2907-04

Fully enclosed structure  
Waterproof, dustproof, and anti-aging design  
IP65  
Supports fiber cable/drop cable's fixing,  
distribution and storage  
Supports splicing, wiring, and fiber storage



### EM-FZU2908-08

Fully enclosed structure  
Waterproof, dustproof, and anti-aging design  
IP65  
Supports fiber cable/drop cable's fixing,  
distribution and storage  
Supports splicing, wiring, and fiber storage



### EM-FZU2909-08

Fully enclosed structure  
Waterproof, dustproof, and anti-aging design  
IP65  
Supports fiber cable/drop cable's fixing,  
distribution and storage  
Supports splicing, wiring, and fiber storage



## Optical Distribution Box



### EM-FZU3001-12

Fully enclosed structure  
Waterproof, dustproof, and anti-aging design  
IP65  
Supports fiber cable/drop cable's fixing,  
distribution and storage  
Supports splicing, wiring, and fiber storage



### EM-FZU3002-12

Fully enclosed structure  
Waterproof, dustproof, and anti-aging design  
IP65  
Supports fiber cable/drop cable's fixing,  
distribution and storage  
Supports splicing, wiring, and fiber storage



### EM-FZU3003-24

Fully enclosed structure  
Waterproof, dustproof, and anti-aging design  
IP65  
Supports fiber cable/drop cable's fixing,  
distribution and storage  
Supports splicing, wiring, and fiber storage



### EM-FZU3004-16

Fully enclosed structure  
Waterproof, dustproof, and anti-aging design  
IP65  
Supports fiber cable/drop cable's fixing,  
distribution and storage  
Supports splicing, wiring, and fiber storage



### EM-FZU3005-16

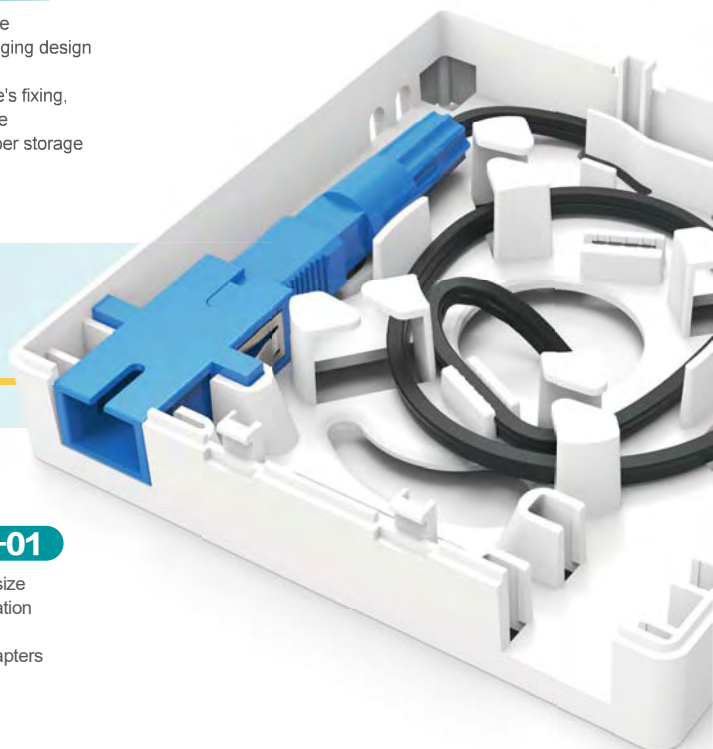
Fully enclosed structure  
Waterproof, dustproof, and anti-aging design  
IP65  
Supports fiber cable/drop cable's fixing,  
distribution and storage  
Supports splicing, wiring, and fiber storage

## SOCKET PANEL



### EM-SZU3107-01

Standard 86 type panel size  
Indoor termination application  
Customized LOGO  
Suitable for SC or DLC adapters





Enmane

# SPLICE TRAY



## Splice Tray



### EM-SZU3501-01

Single layer maximum 24 cores  
Stackable use  
Swivel buckle design helps to open the upper layer  
Removable splice holder  
Transparent dustproof upper cover plate  
One single-layer identification card



### EM-SZU3502-24

Single layer maximum 24 cores  
Stackable use  
Swivel buckle design helps to open the upper layer  
Removable splice holder  
Removable upper cover  
Customizable LOGO



### EM-SZU3503-24

Single layer maximum 24 cores  
Stackable use  
Swivel buckle design helps to open the upper layer  
Removable upper cover  
Customizable LOGO



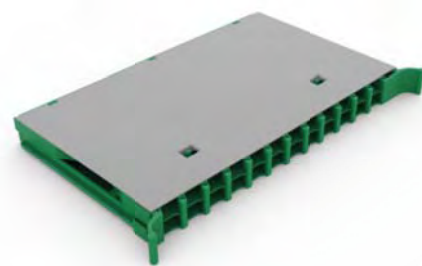
### EM-SZU3504-24

Single layer maximum 24 cores  
Height of the layers is 38.6mm  
Stackable use  
Swivel buckle design helps to open the upper layer  
Transparent dustproof upper cover plate  
Customizable LOGO



### EM-SZU3505-12

Standard 12 port keystone module  
Copper/fiber transfer use  
Removable upper cover  
Customizable color



### EM-SZU3506-24

Standard 24 port keystone module  
Copper/fiber transfer use  
Removable upper cover  
Customizable color

Enmane

# FIBER PROTECTION & MANAGEMENT ACCESSORIES





# Fiber Protection & Management Accessories



## EM-HZU3601-01

High strength ABS material  
30X35mm size  
Open-end design for quick cable management  
Customizable color



## EM-2ZU3602-01

2.0mm panel use  
50X18mm size  
Arc design avoids cable broken  
Easy to assemble



## EM-AZU3603-01

ABS material  
Copper/Fiber transfer use  
Customizable color



## EM-OZU3604-01

One divided into four  $\Phi$  60mm. 35mm height column  
Height 35mm roundness  
Stackable use  
Anti-cable escaping design  
Fixed with screw



## EM-OZU3605-01

One divided into two  $\Phi$  60.16mm height column  
Height 16mm roundness  
Stackable use  
Anti-cable escaping design  
Fixed with screw



## EM-IZU3606-01

Independent  $\Phi$  100mm. height 10mm claw  
Height 10mm five claws roundness  
Stackable use  
Anti-cable escaping design  
Fixed with screw



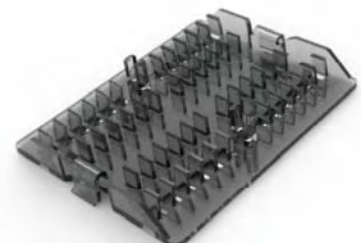
## EM-DZU3607-12

Double layer design with 12 fibers  
Independent & removable  
Anti ejecting design  
Easy to assemble



## EM-DZU3608-12

Double layer design with 12 fibers  
Independent & removable  
Anti ejecting design  
Easy to assemble



## EM-DZU3609-24

Double layer design with 24 fibers  
Independent & removable  
Anti ejecting design  
Easy to assemble

# Fiber Protection & Management Accessories



## EM-1ZU3610-01

1.5-2.0 panel use  
Touch & press design for easy open  
Built-in spring design  
Easy to assemble



## EM-1ZU3611-01

1.0-1.2 panel use  
Touch & press design for easy open  
Built-in spring design  
Easy to assemble



## EM-MZU3612-01

MPO Adaptor dust cap



## EM-8ZU3701-01

Single layer maximum 24 cores  
Height of the layers is 38.6mm  
Stackable use  
Swivel buckle design helps to open the upper layer  
Transparent dustproof upper cover plate  
Customizable LOGO



## EM-2ZU3702-01

Standard 12 port keystone module  
Copper/fiber transfer use  
Removable upper cover  
Customizable color



## EM-2ZU3703-01

Standard 24 port keystone module  
Copper/fiber transfer use  
Removable upper cover  
Customizable color



## EM-SZU3704-01

SC/DLC universal square hole plug



## EM-MZU3705-01

MPO square hole plug



## EM-DZU3706-01

DSC/4LC universal square hole plug

## Fiber Protection & Management Accessories



### EM-MZU3707-01

M13.5 cable inlet diameter  
Tensile strength  $\geq 100\text{N}$



### EM-MZU3708-01

M 21 cable inlet diameter  
Tensile strength  $\geq 100\text{N}$



### EM-FZU3709-01

For 1.0-1.5mm thickness panel use  
Press to lock pull to unlock  
Easy to assemble



### EM-FZU3710-01

For 1.0-1.5mm thickness panel use  
Press to lock pull to unlock  
Easy to assemble





Jake Wang  
Sales Director

## **ENMAN GROUP**

E-mail: [Jake.Wang@enmangroup.cn](mailto:Jake.Wang@enmangroup.cn)

Web: [www.enmangroup.cn](http://www.enmangroup.cn)

WeChat: 18915687539      Whatsapp: +86 18915687539